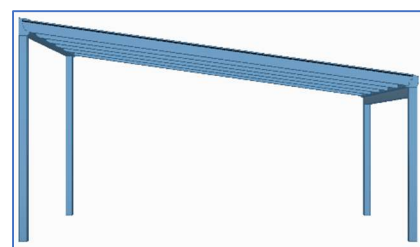
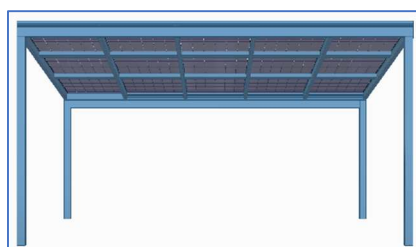
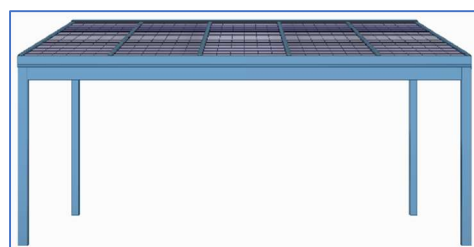
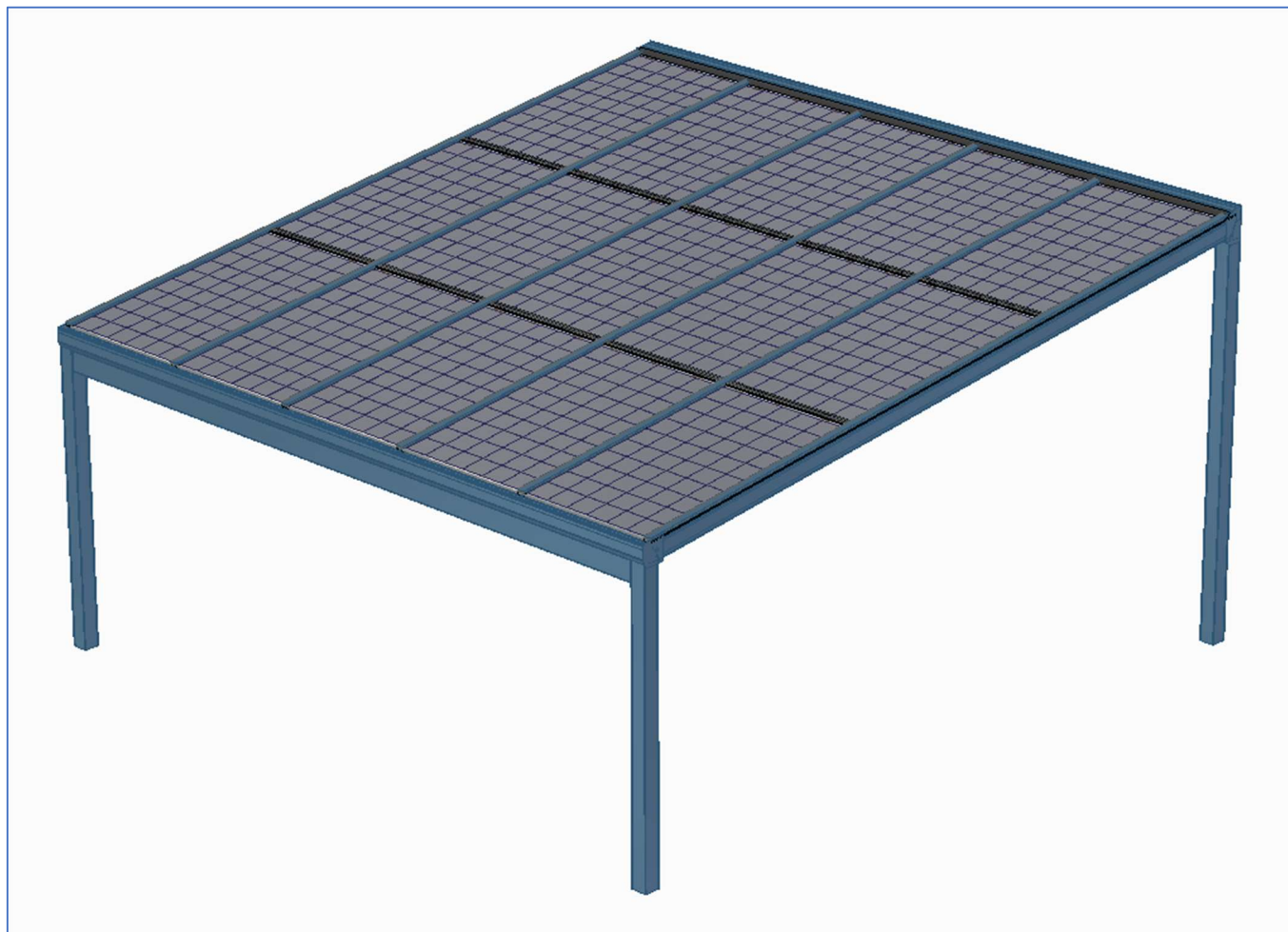


Technický list solárních přístřešků Solar Energo série Neapol



## Solární přístřešek NEAPOLI 5 a NEAPOLI 3

### Standartní barevné provedení:

- RAL7016TD (Antracit matná struktura)
- RAL8017T (Hnědá matná struktura)
- RAL9010 (Bílá lesklá)
- RAL9016 (Šedá lesklá)

### Střešní krytina:

- Solární panel SOLID Bifacial tl. 7,1 mm 355Wp

### Velikost nosného sloupku:

- 110x110 mm tloušťka steny 2,5 mm, výška (podchozí) 2150 mm

### Velikost nosné krokve:

- 130 (146,5) x52 mm, délka 5464 mm

### Uchycení střešní krytiny:

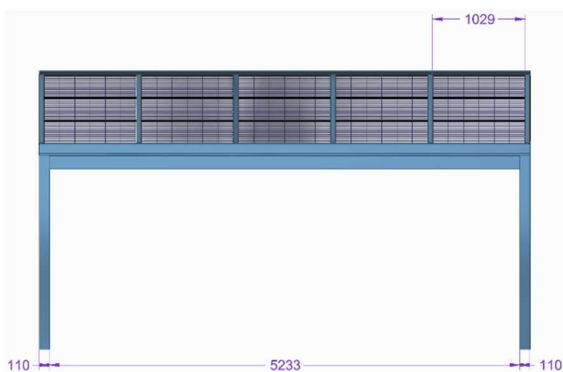
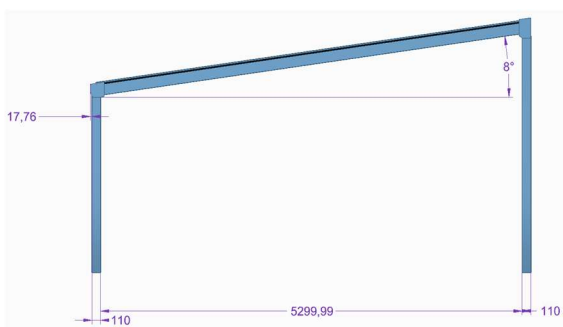
- Pryžové těsnění

### Sklon střechy:

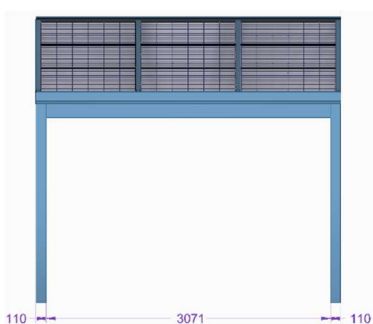
- 8° (14%)

### Možnost jiných rozměrů:

- Modulární dle katalogu



NEAPOLI 5

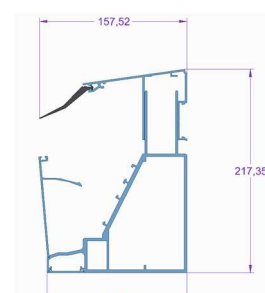
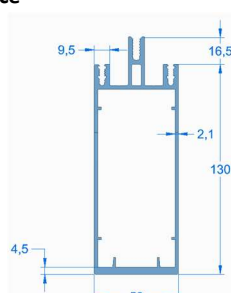
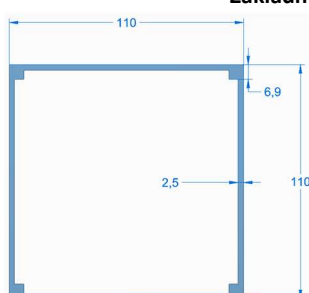
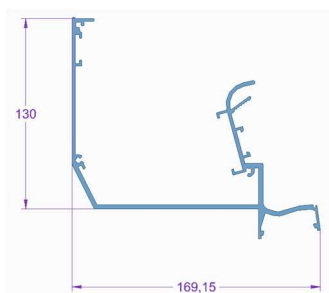


NEAPOLI 3

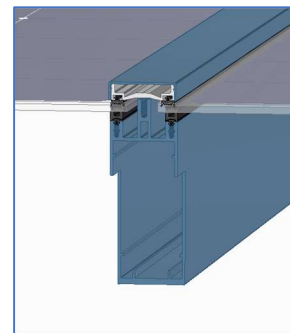
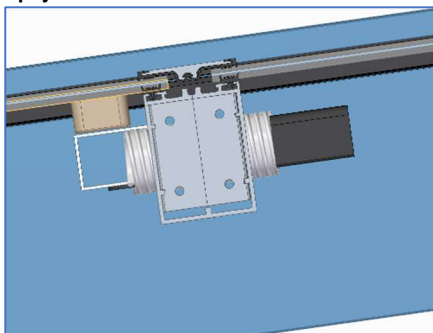
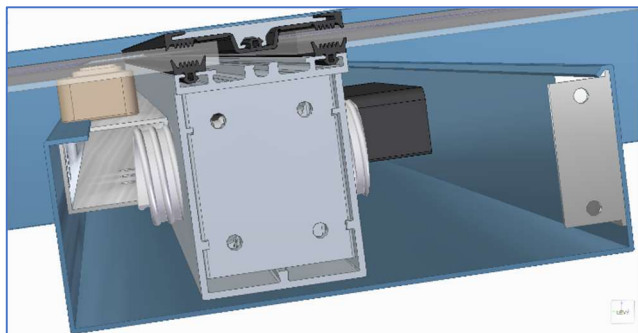
### Informace:

Modulární přístřešek je možné napojovat do sebe šikmou částí ve tvaru inline. Je nutné si vybrat správnou sestavu.

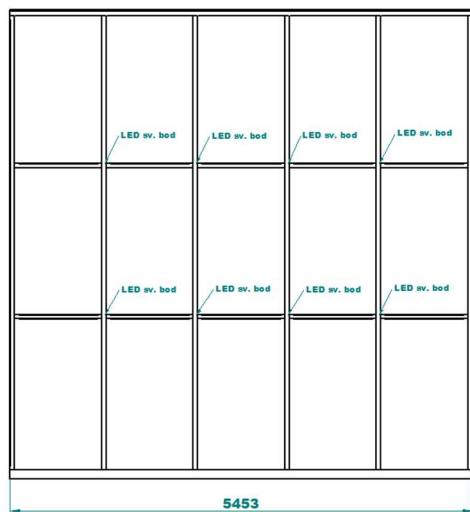
### Základní profily



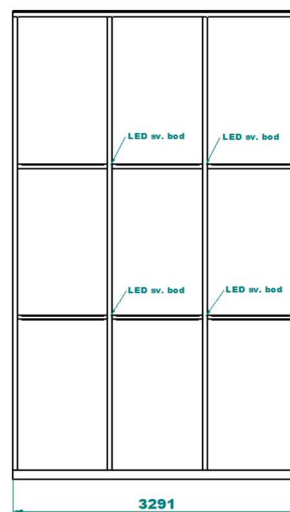
### Spojení sklad s konstrukcí



Varianta s dvouřadovým osvětlením

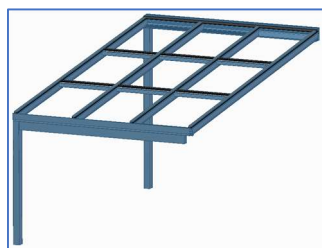


NEAPOLI 5

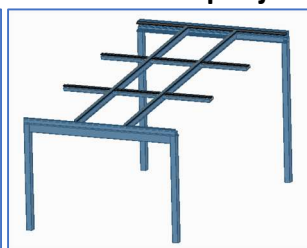


NEAPOLI 3

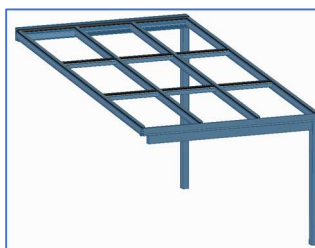
### Modulová konstrukce pro jedno stání



Neapoli 3R

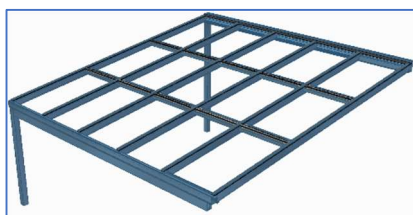


Neapoli 3C

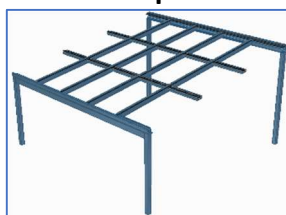


Neapoli 3L

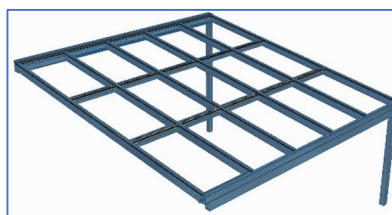
### Modulové stání pro dvou stání



Neapoli 5R



Neapoli 5C



Neapoli 5L